



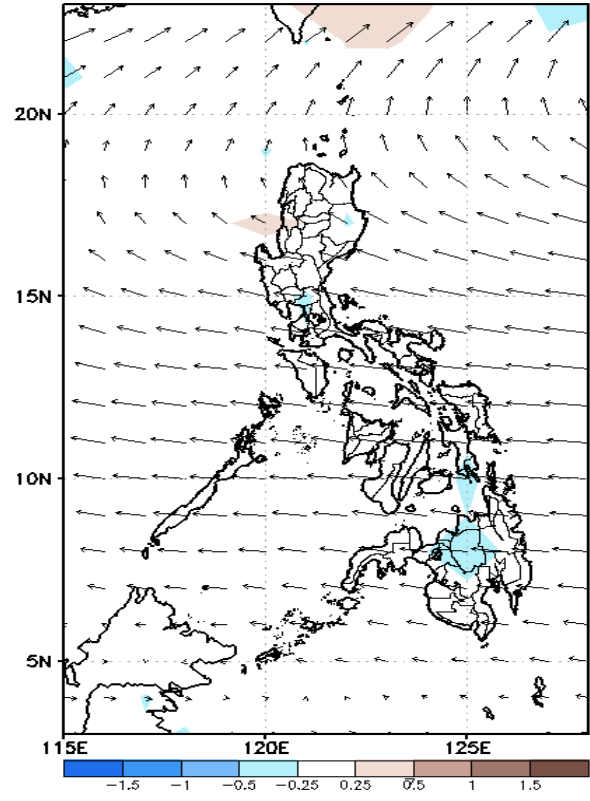
Week 1 & Week 2 Forecast for the Philippines using GEFS Model



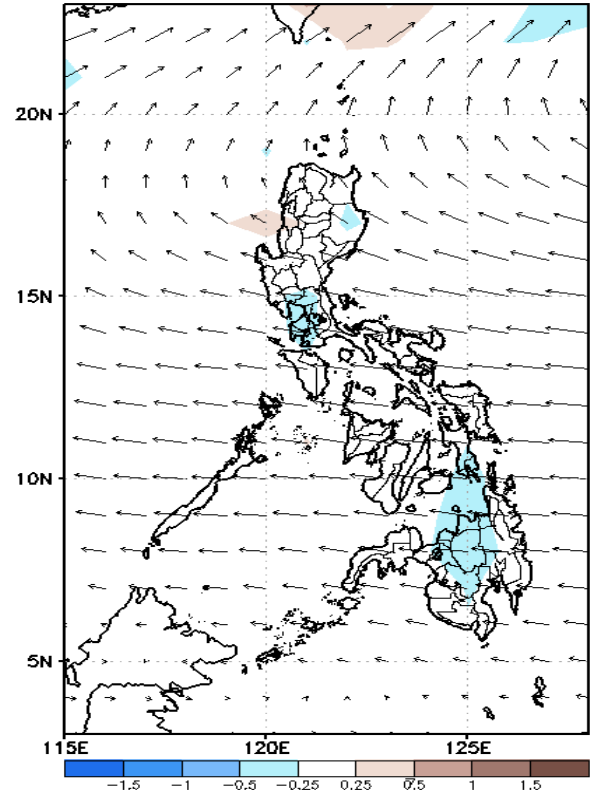
GEFS Week-1 Forecasts: Divergence & Wind Anomaly

Week 1: May 04-10, 2022

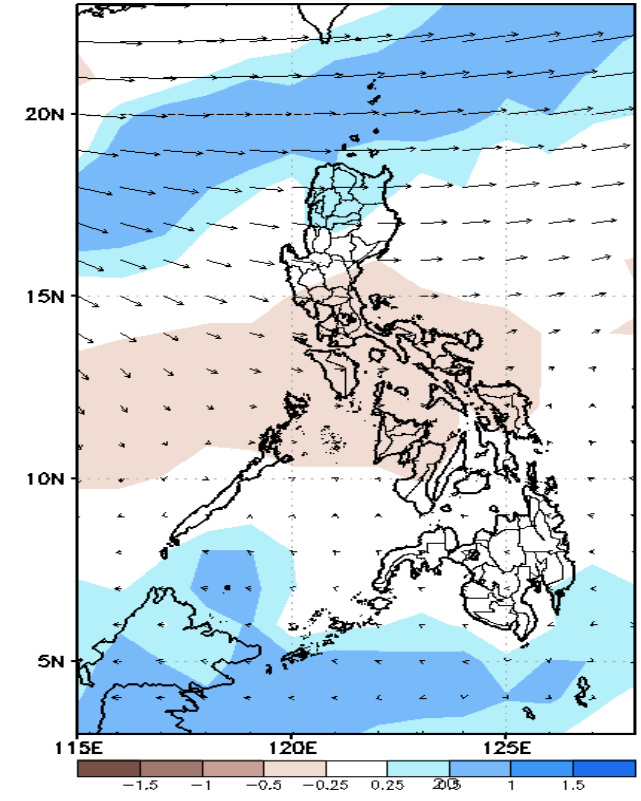
GEFS Week-1 850-hPa Divergence and Wind Anom
Valid: 20220504 - 20220510



GEFS Week-1 700-hPa Divergence and Wind Anom
Valid: 20220504 - 20220510



GEFS Week-1 200-hPa Divergence and Wind Anom
Valid: 20220504 - 20220510

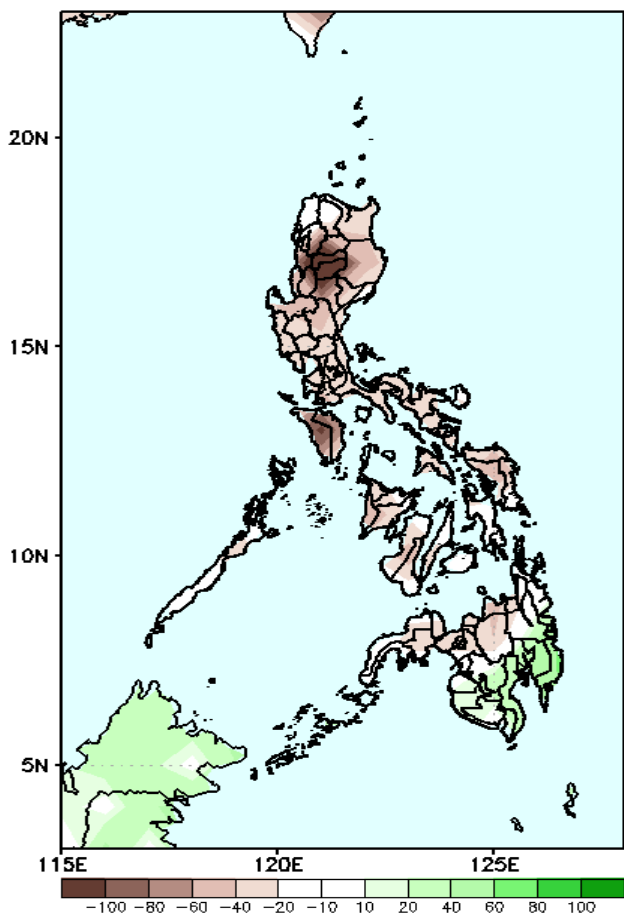


Upper and low level Divergence suggest a likelihood of light precipitation in some parts of Northern Luzon and Southern Mindanao. Easterlies affecting most parts of the country attributing to warmer temperatures during the forecast period.

Precipitation Anomaly and Exceedance Probability > 25/50 mm

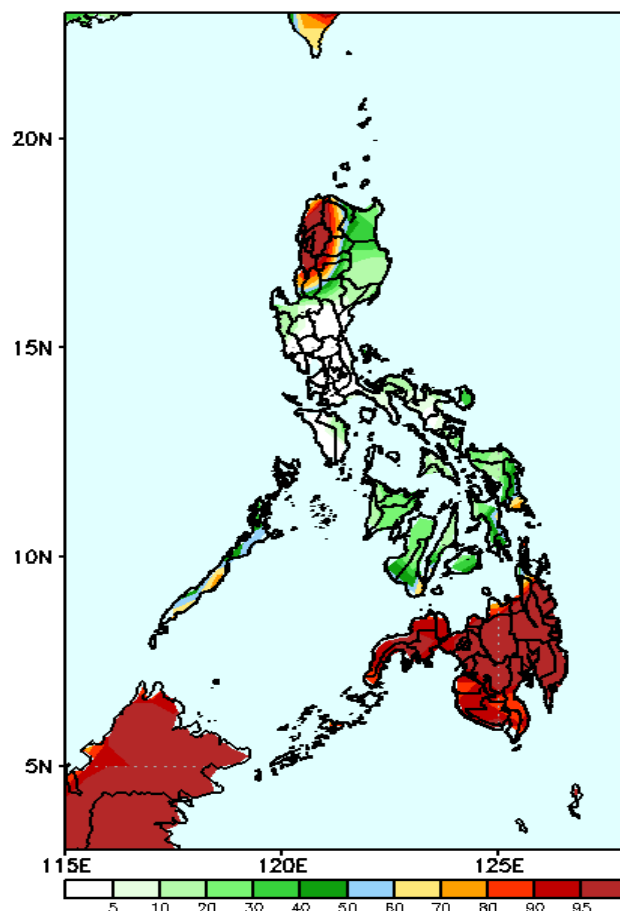
Week 1: May 04-10, 2022

GEFS Week-1 Precip Anomaly
Valid: 20220504 - 20220510



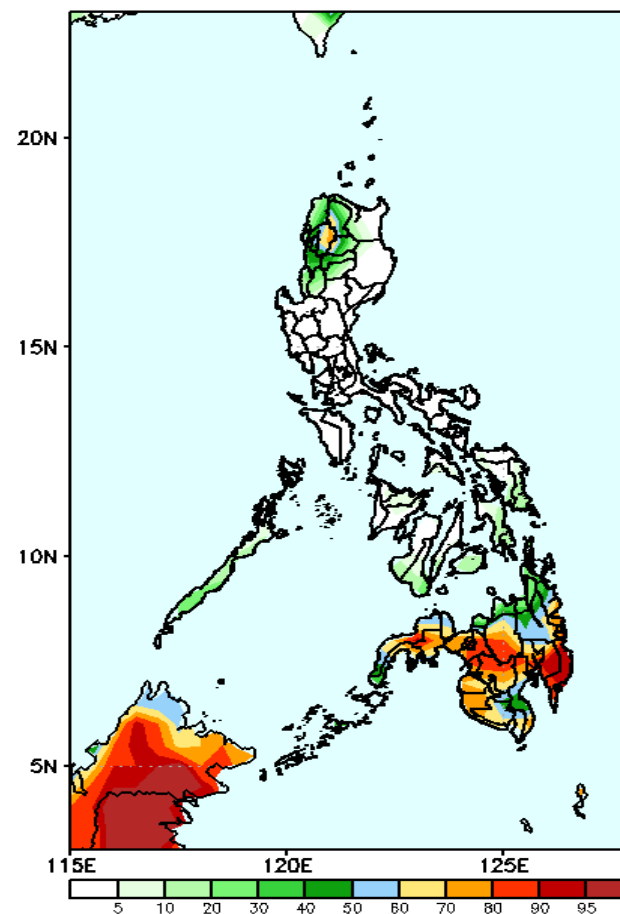
Rainfall deficit of more than 100mm in Cordillera Region & Mindoro and 50-100mm for the rest of the country (except in southern Mindanao where there is 40-50mm increase of rainfall) during the forecast period.

GEFS Week-1 Exceedance Prob. > 25mm
Valid: 20220504 - 20220510



High probability of rainfall to exceed 25mm in Ilocos provinces, La Union, most parts of Cordillera Region and Mindanao while less likely for the rest of the county during the forecast period.

GEFS Week-1 Exceedance Prob. > 50mm
Valid: 20220504 - 20220510

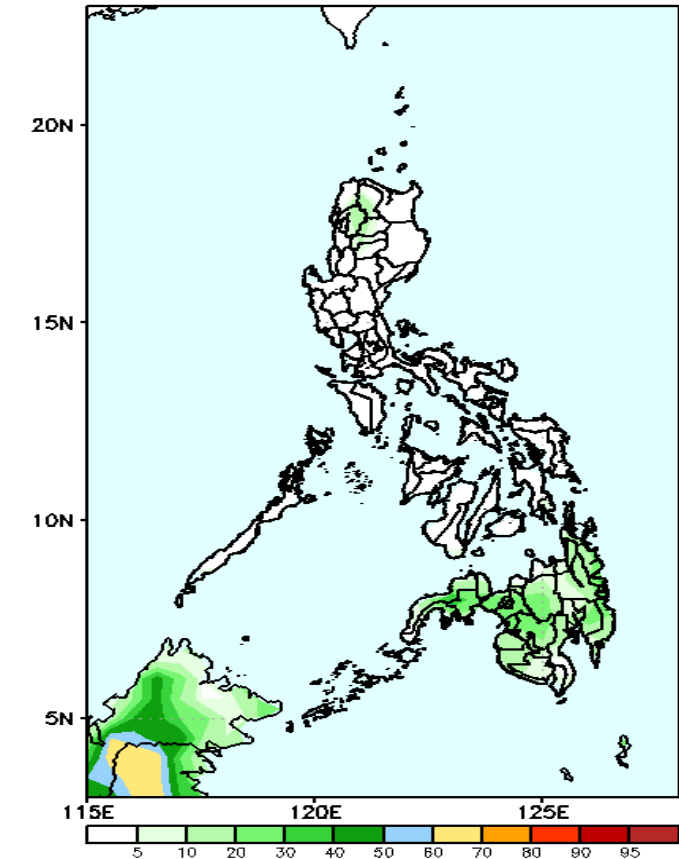


60-95% probability of rainfall to exceed 50mm in most parts of Mindanao while less likely for the rest of the county during the forecast period.

Exceedance Probability > 100/150/200 mm

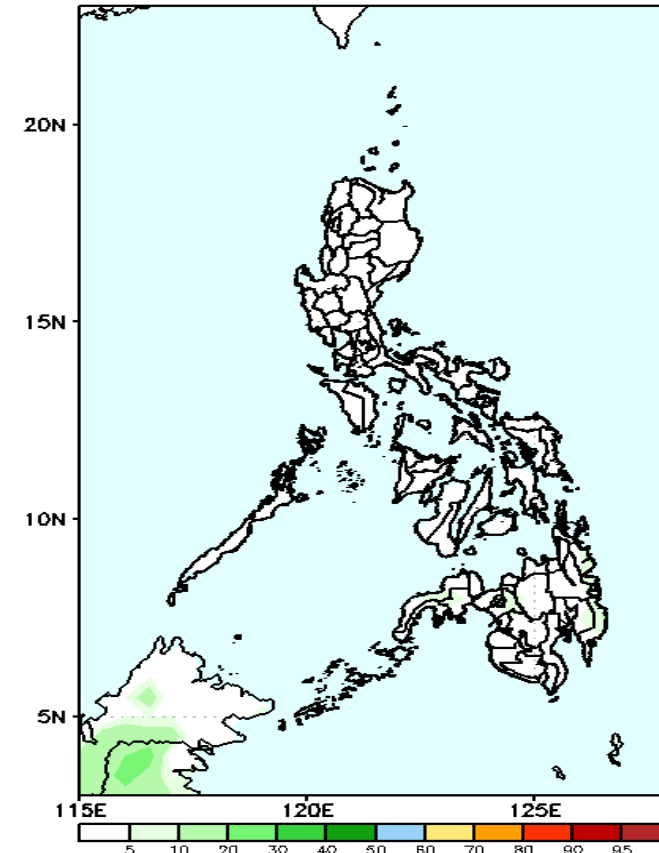
Week 1: May 04-10, 2022

GEFS Week-1 Exceedance Prob. > 100mm
Valid: 20220504 - 20220510



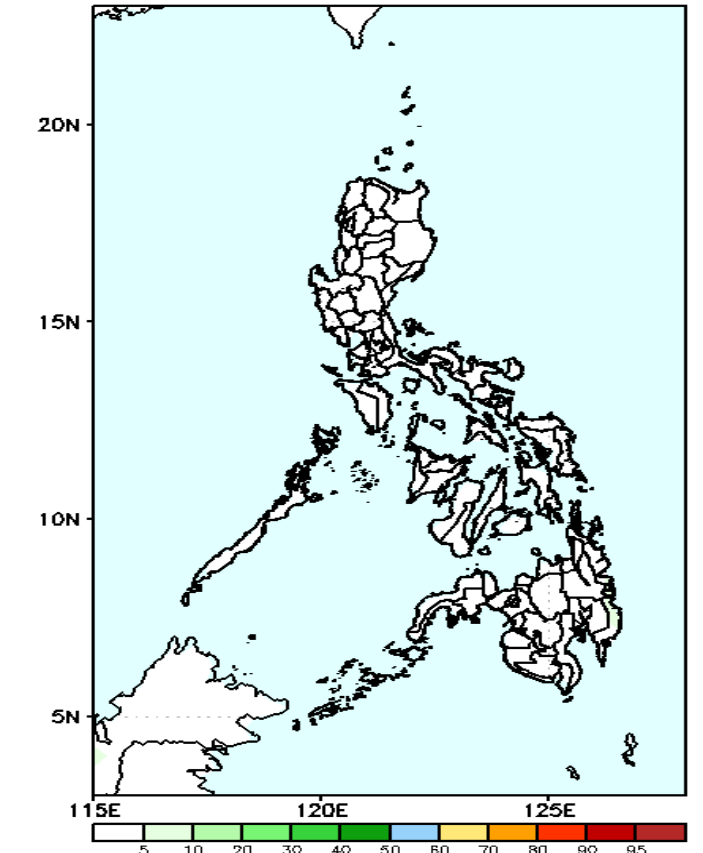
Low probability of rainfall to exceed 100mm in most parts of the country during the forecast period.

GEFS Week-1 Exceedance Prob. > 150mm
Valid: 20220504 - 20220510



Low probability of rainfall to exceed 150mm in most parts of the country during the forecast period.

GEFS Week-1 Exceedance Prob. > 200mm
Valid: 20220504 - 20220510



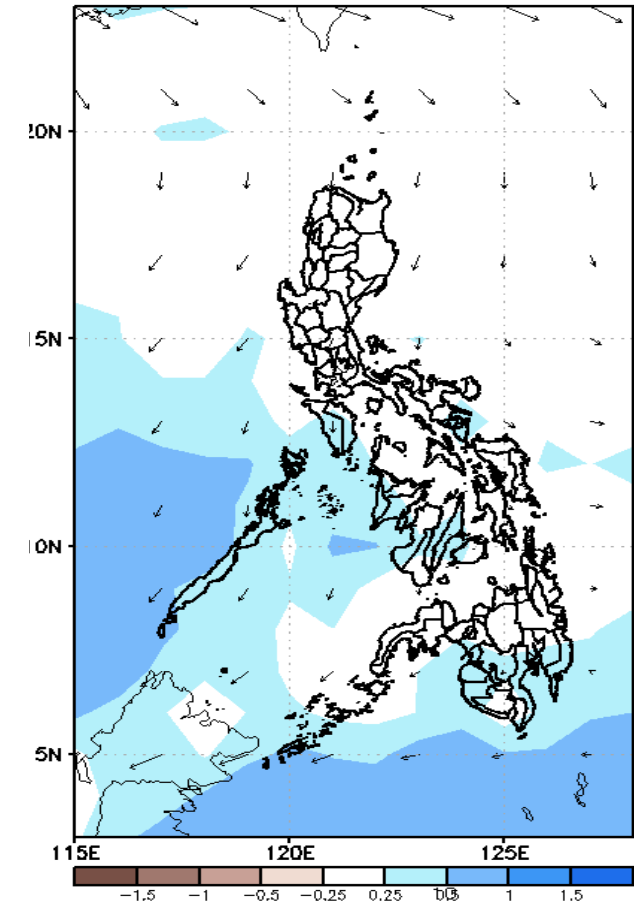
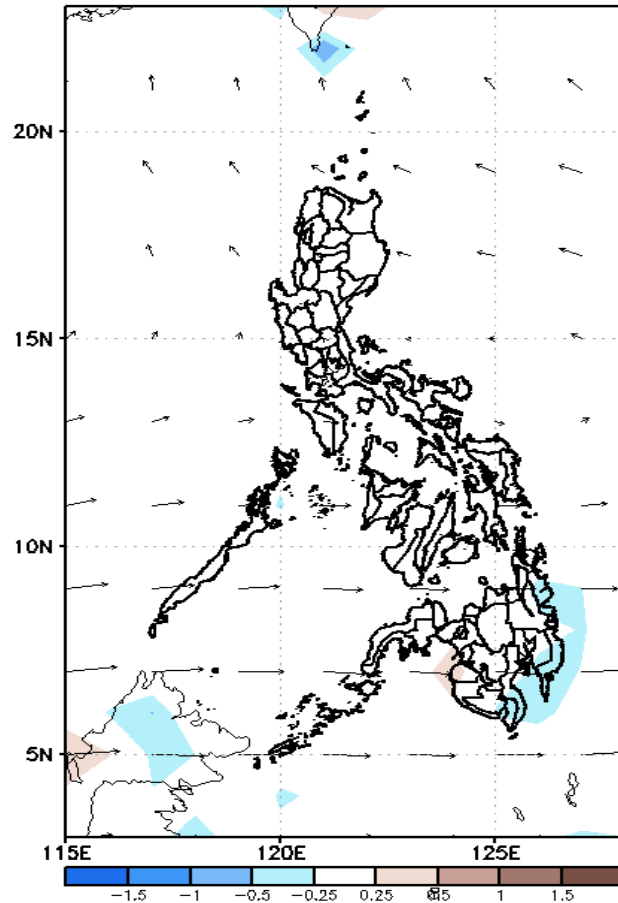
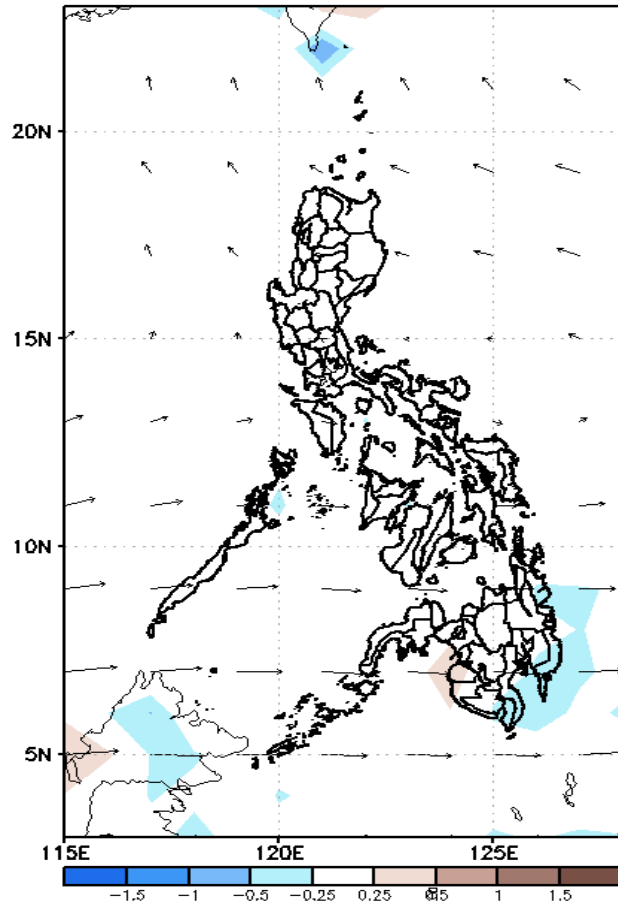
Low probability of rainfall to exceed 200mm in most parts of the country during the forecast period.



GEFS Week-2 Forecasts: Divergence & Wind Anomaly

Week 2: May 11-17, 2022

GEFS Week-2 850-hPa Divergence and Wind Anomaly Valid: 20220511 - 20220517 GEFS Week-2 700-hPa Divergence and Wind Anomaly Valid: 20220511 - 20220517 week-2 200-hPa Divergence and Wind Anomaly Valid: 20220511 - 20220517

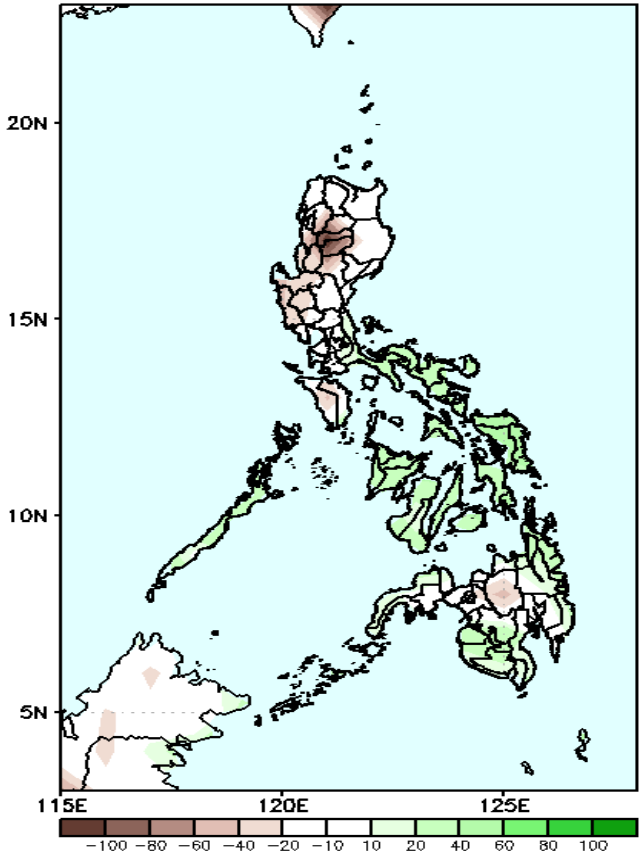


Upper and low level Divergence suggest a likelihood of light precipitation in most parts of MIMAROPA, Western Visayas and South and Western Mindanao. Easterlies affecting most parts of the country attributing to warmer temperatures during the forecast period.

Precipitation Anomaly and Exceedance Probability > 25/50 mm

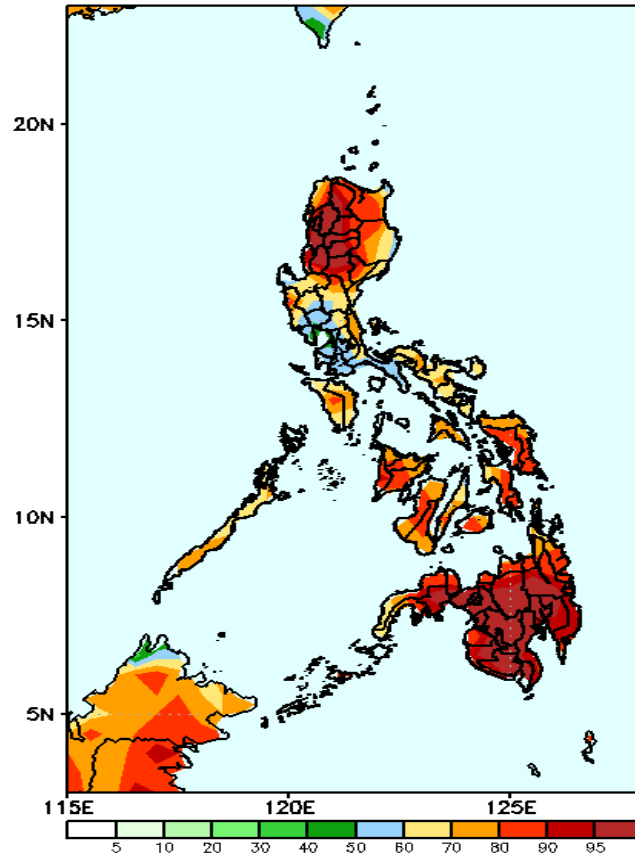
Week 2: May 11-17, 2022

GEFS Week-2 Precip Anomaly
Valid: 20220511 - 20220517



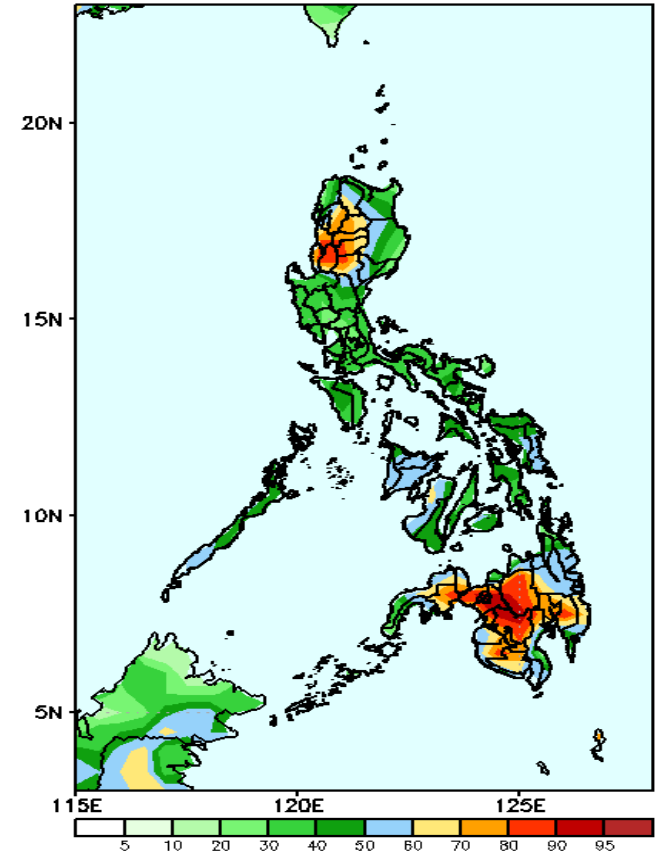
Rainfall deficit of 20-80mm in most parts of the Luzon and Bukidnon while 40-80mm increase of rainfall for the rest of the country during the forecast period.

GEFS Week-2 Exceedance Prob. > 25mm
Valid: 20220511 - 20220517



High probability of rainfall to exceed 25mm in most parts of the country during the forecast period.

GEFS Week-2 Exceedance Prob. > 50mm
Valid: 20220511 - 20220517



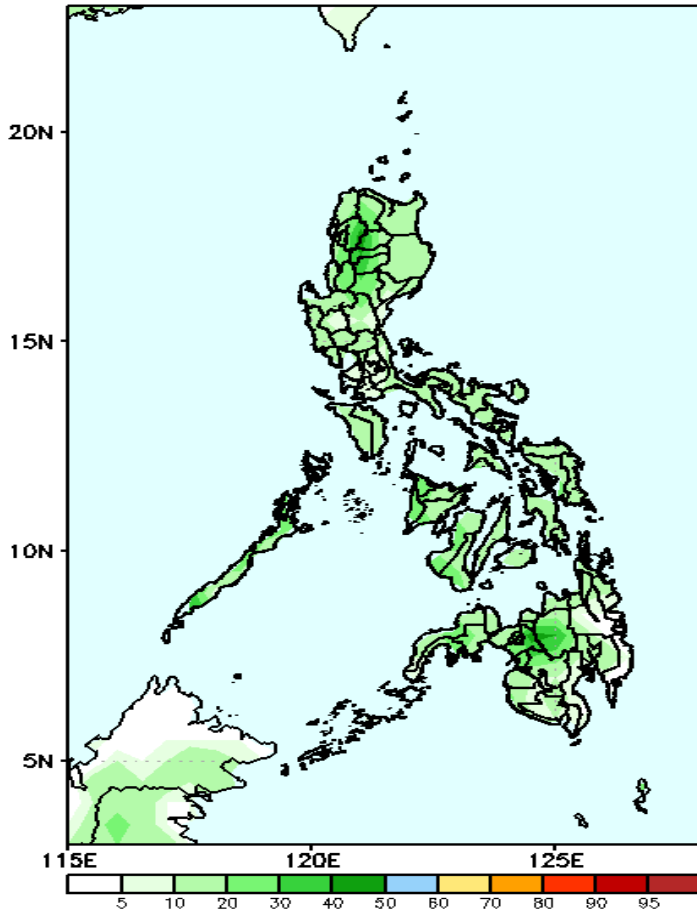
High probability of rainfall to exceed 50mm in Ilocos Sur, La Union, Cordillera Region and most of Mindanao while less likely for the rest of the country during the forecast period



Exceedance Probability > 100/150/200 mm

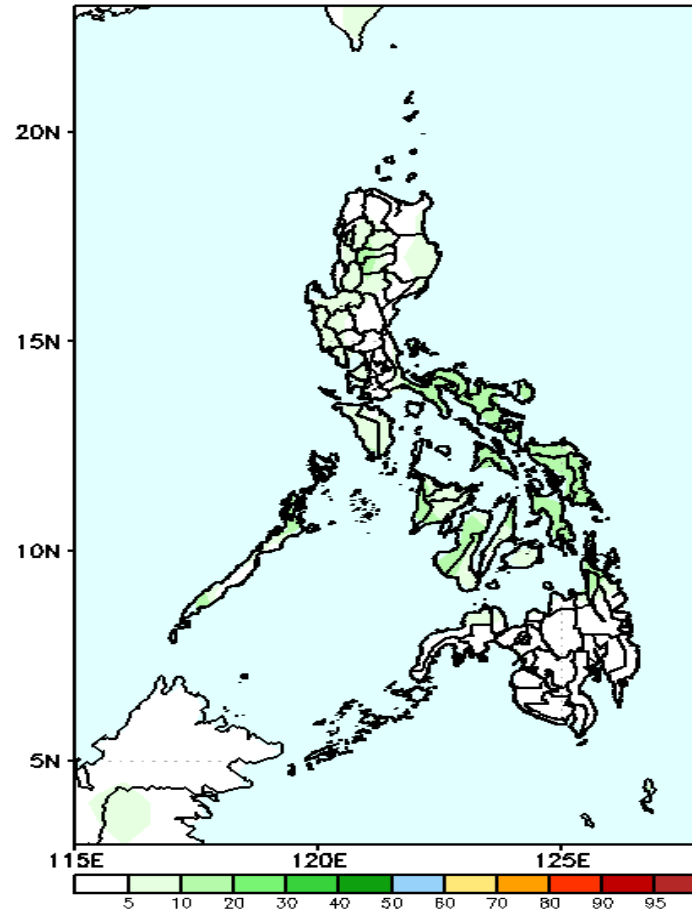
Week 2: May 11-17, 2022

GEFS Week-2 Exceedance Prob. > 100mm
Valid: 20220511 - 20220517



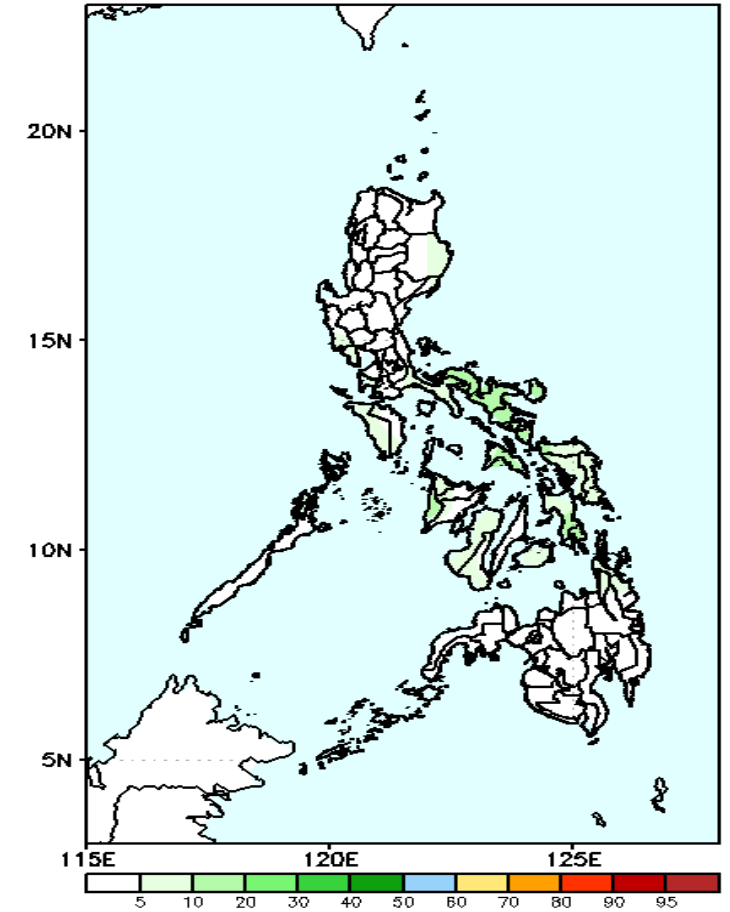
Low probability of rainfall to exceed 100mm in most parts of the country during the forecast period.

GEFS Week-2 Exceedance Prob. > 150mm
Valid: 20220511 - 20220517



Low probability of rainfall to exceed 150mm in most parts of the country during the forecast period.

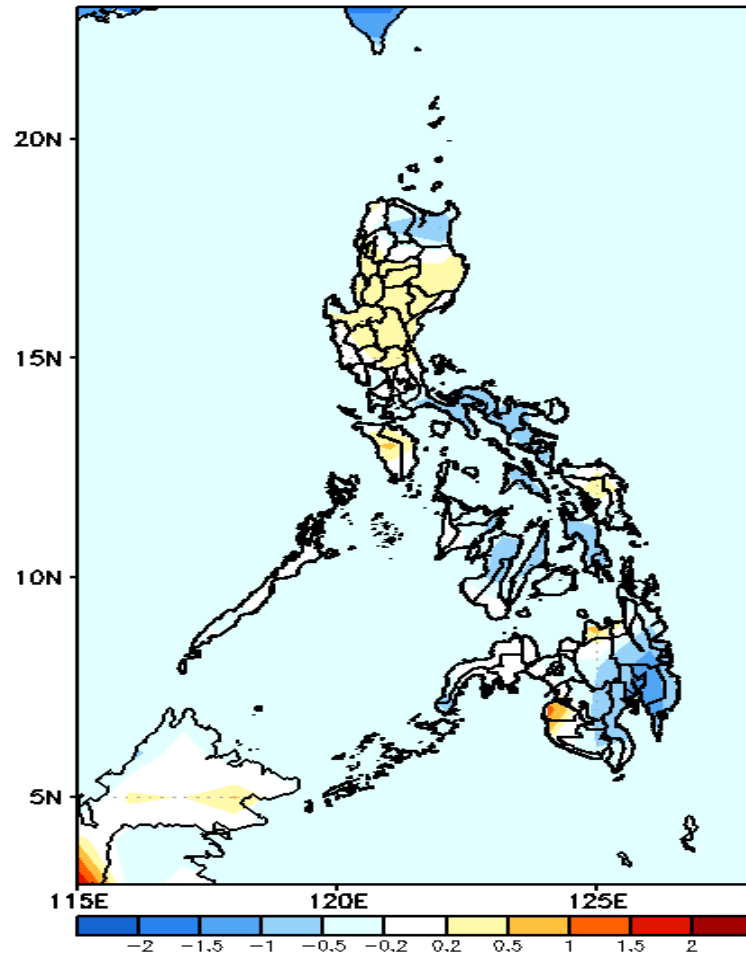
GEFS Week-2 Exceedance Prob. > 200mm
Valid: 20220511 - 20220517



Low probability of rainfall to exceed 200mm in most parts of the country during the forecast period.

GEFS Week-1 & 2 Forecasts: T2m Anomaly

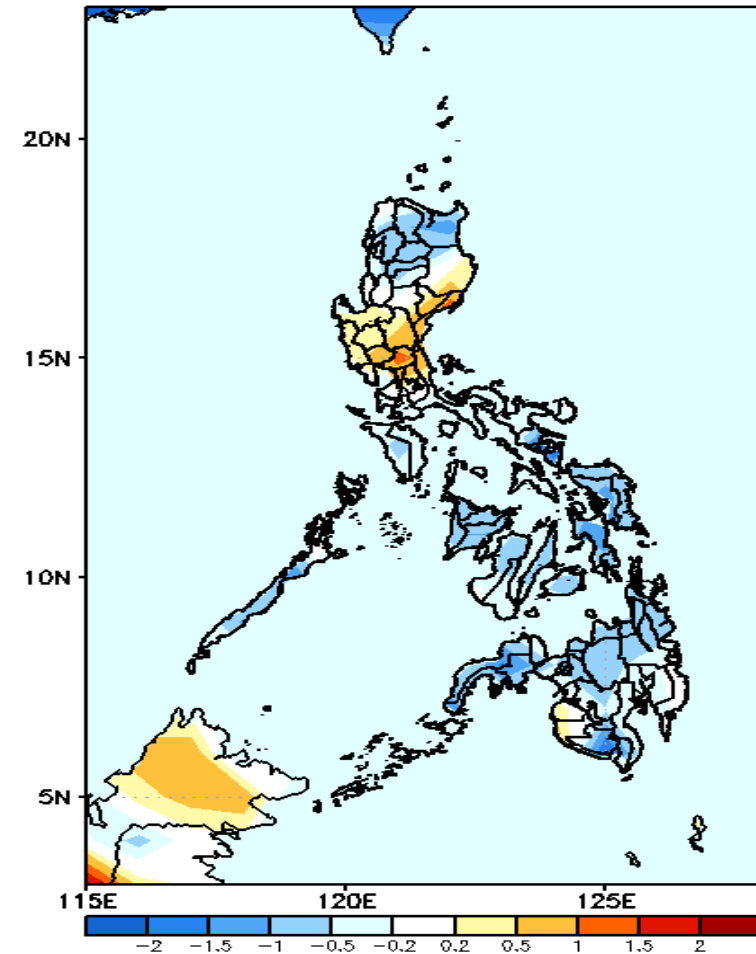
GEFS Week-1 T2m Anomaly
Valid: 20220504 - 20220510



2m Temperature Week 1: May 04-10, 2022

Slightly cooler to cooler than average surface air temperature will likely experience in Apayao, Cagayan, Quezon, Bicol Region and most parts of Visayas and Mindanao while average to slightly warmer for the rest of Luzon and Maguindanao during the forecast period.

GEFS Week-2 T2m Anomaly
Valid: 20220511 - 20220517



2m Temperature Week 2: May 11-17, 2022

Slightly cooler to cooler than average surface air temperature will likely experience in most parts of Northern & Southern Luzon, most parts of Visayas and Mindanao while slightly warmer to warmer temperature for the rest of Luzon during the forecast period.